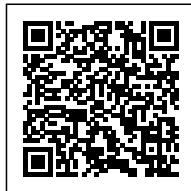


WFW ADVISES OPDE ON PROJECT FINANCING OF TWO PV PLANTS

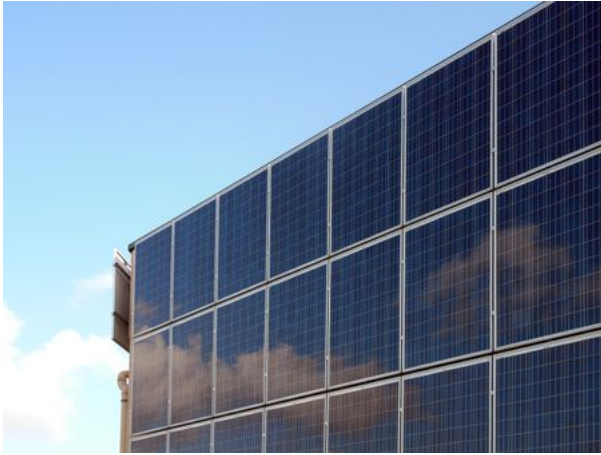
Posted on 03/04/2019



Category: [Archive](#)



Watson Farley & Williams (WFW) advised OPDE Investment España on the project financing and power purchase agreements (PPAs) for two 50 MW photovoltaic (PV) plants in Spain.



The PV plants are located in Mérida and Puerto Real.

The WFW team was led by partner Rodrigo Berasategui.

OPDE is responsible for the development, financing, construction, operation and maintenance of energy projects.